



CopiOs® Pericardium Membrane

The unique
Tutoplast® Process

Strong meets supple.

1 DEMONSTRATED PERFORMANCE

- Clinically demonstrated performance in guided bone regeneration procedures,¹⁻² where ease of manipulation and adaptability to surface contours is essential

2 LONG-LASTING

- Shown to provide a stable, long-lasting barrier during healing and integration of *Puros*® Allografts and staged or immediately placed implants¹⁻²

3 RETAINS NATURAL TISSUE STRUCTURE

- Supports an aesthetic soft tissue response¹⁻² through facilitation of cell attachment and proliferation and remodeling into vascularized connective tissue^{1,3}
- Retains the structure and composition of natural tissue due to the proprietary *Tutoplast* Process,⁴ leading to optimal performance and handling¹⁻²

CopiOs Pericardium Membrane—
Designed to work with *Puros* Allografts.

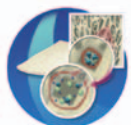


THE UNIQUE TUTOPLAST PROCESS

The proprietary *Tutoplast* Process assures the highest standard of tissue safety and quality with minimal risk of disease transmission.^{4,5}

The process preserves the valuable collagen matrix and tissue integrity while inactivating pathogens and gently removing unwanted materials, such as cells, antigens and viruses.^{4,5} The result is safe, biocompatible tissue.

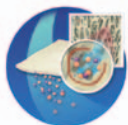
For over 40 years, *Tutoplast* processed tissues have been safely used in more than 3 million procedures.⁶



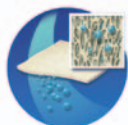
Osmotic treatment



Oxidative treatment



Alkaline treatment



Solvent dehydration



Low-dose gamma irradiation

¹ Kistler S, Bayer G, Kistler F, Am Lech L. Experience with the biological Tutodent® membrane in implant practice. *Implantologie Zeitung Journal*. 2004;8(7):47-48.

² Simsek B, Simsek S. Evaluation of success rates of immediate and delayed implants after tooth extraction. *Chinese Medical Journal*. 2003;116(8):1216-1219.

³ Steigmann M. Pericardium membrane and xenograft particulate grafting materials for horizontal alveolar ridge defects. *Implant Dent*. 2006;15:186-191.

⁴ Schoepf C. Allograft safety: efficacy of the Tutoplast® Process. *Int J Oral Implantol*. 2006;7:10-15.

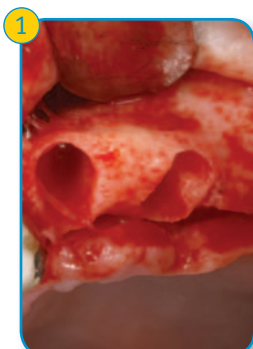
⁵ Tadic D, Epple M. A thorough physicochemical characterization of 14 calcium phosphate-based bone substitution materials in comparison to natural bone. *Biomaterials*. 2004;25:987-994.

⁶ Data on file with RTI Biologics, Inc.

Ordering Information

Catalog Number	Description
97002	<i>CopiOs</i> Pericardium Membrane, 15x20 mm
97003	<i>CopiOs</i> Pericardium Membrane, 20x30 mm
97004	<i>CopiOs</i> Pericardium Membrane, 30x40 mm

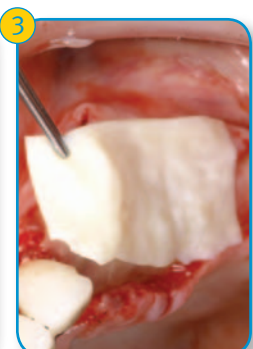
Take a closer look



1 Immediate extraction sites, maxillary left.



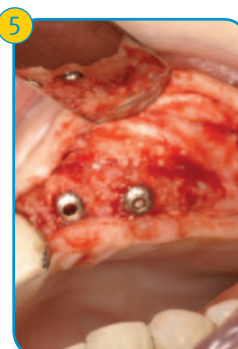
2 Immediate *Tapered Screw-Vent*® Implant placement and grafting with *Puros*® Cancellous Particulate Allograft.



3 *CopiOs* Pericardium Membrane placement.



4 *CopiOs* Pericardium Membrane in combination with autologous fibrin.



5 6-month re-entry.

Photos ©2012 Dr. Maurice A. Salama, DMD. All rights reserved. Individual results may vary.

To learn more about *CopiOs* Pericardium Membrane, please visit us online at www.zimmerdental.com/strongmeetssupple or to speak to a sales representative, call 1 (800) 854 7019.

To receive our eNews visit us at http://www.zimmerdental.com/news_eNewsletterSignUp.aspx

For more information about our Products, Regenerative Materials and Educational Opportunities, contact us:

In the U.S. 1 (800) 854-7019
To fax an order 1 (888) 225-2483
Outside the U.S. +1 (760) 929-4300
Australia +61 (0)2 9950 5434 or 1 (800) 241 916
Canada +1 (905) 567-2073 or 1 (800) 265-0968
China +86 21 2211 5147

France +33 (0)1 45 12 35 35
Germany +49 (0)761 1 56 47 0
Israel +972 (0)3 6124242
Italy +39 043 855 5573
Spain +34 93 846 05 43



Zimmer Dental
1900 Aston Avenue
Carlsbad, CA 92008-7308
USA

www.zimmerdental.com